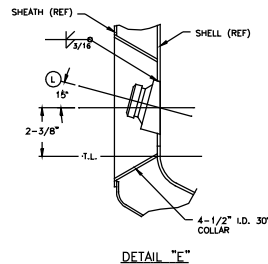


ELEVATION ONLY



- GENERAL NOTES:**
- ALL DIMENSIONS ARE IN INCHES AND GENERAL TOLERANCES ARE AS FOLLOWS:  
VESSEL SHELL DIAMETER  $\pm 1/16$  OF VESSEL I.D. PER UG-80 (a-1), 2004, A-06 A.S.M.E. CODE, SECTION VIII, DIVISION 1.  
FORMED VESSEL HEAD TOLERANCE PER UG-81 (a), 2004, A-06 A.S.M.E. CODE, SECTION VIII, DIVISION 1.  
GENERAL TOLERANCES: FRACTIONS  $\pm 1/8$ ", ANGLES  $\pm 1^\circ$ . (UNLESS OTHERWISE NOTED)
  - VESSEL WEIGHT EMPTY: 500 LBS APPROX.
  - ALL MATERIAL, S.S. UNLESS NOTED OTHERWISE.
  - VESSEL SUPPLIED W/ A PRE-VALIDATION DOCUMENTATION PACKAGE
  - VESSEL TO BE PASSEVATED.
  - VESSEL TO BE SPRAYBALL TESTED.
  - JACKET PAINTED W/ THURMALOX 70 PRIOR TO INSULATING.

- DESIGN DATA:**
- 2004, A-06 ADDENDA, A.S.M.E. CODE, SECTION VIII, DIVISION 1, CODE SYMBOL "U"
  - DESIGN AND TEST  
DESIGN PRESSURE FULL VACUUM -30 PSI FULL JACKET VACUUM -30 PSI  
DESIGN TEMPERATURE 308° F 332° F  
TEST PRESSURE 79 PSI 120 PSI

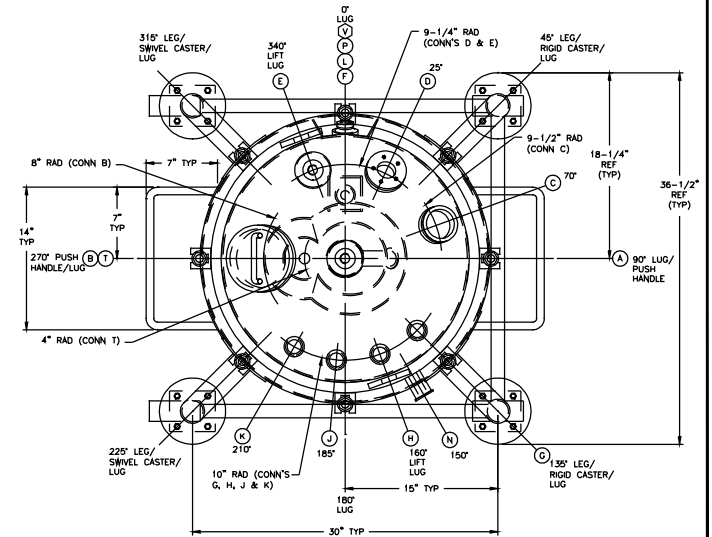
- MATERIAL SPECIFICATIONS:**
- |  | SHELL             | NOZZLES   | TOP HEAD           | BOTTOM HEAD       | DIMPLE     |
|--|-------------------|-----------|--------------------|-------------------|------------|
|  | SA240316L, 0.141" | SA479316L | SA240316L, 0.1875" | SA240316L, 0.141" | SA479316L  |
|  |                   | RINGS     |                    |                   | SA479316L  |
|  |                   | LEGS      |                    |                   | SA312TP304 |
|  |                   | GASKETS   |                    |                   | EPDM       |

- FINISH SPECIFICATIONS:**
- STAINLESS STEEL INTERNAL SURFACES: LESS THAN 6 Ro W/ LUSTER AFTER ELECTROPOLISH
  - STAINLESS STEEL EXTERNAL SURFACES: 20-30 Ro W/ ALL WELDS GROUND SMOOTH & FLUSH

MODEL NO: 110 LITER STYLE "DP" TANK  
P.O. NO.: |  
LEE SERIAL NUMBER: 49870-1

NOZZLE SCHEDULE

MARK	SIZE	NO. REQ'D	DESCRIPTION
A	1-1/2"	1	NOVASEPTIC FLUSH TANK DIAPHRAGM VALVE W/ TRI-CLAMP END CONN, EPDM DIAPHRAGM & SPRING RETURN AIR ACTUATOR
B	6"	1	TRI-CLAMP FERRULE W/ CAP, HANDLE, 13MPH CLAMP & EPDM GASKET
C	3"	1	TRI-CLAMP FERRULE W/ CLAMP, EPDM GASKET & J.G. PAPALIAS SERIES SVTC SIGHTGLASS ASSY W/ BOROSILICATE LENS
D	1-1/2"	1	ASPECO ASEPCONNECT W/ BS&B GCR-N RUTPUE DISC
E	3"	1	TRI-CLAMP FERRULE W/ CLAMP, EPDM GASKET & REMOVABLE TRI-CLAMP DIP-TUBE (DETAILS "A" & "C")
F	3"	1	TRI-CLAMP FERRULE W/ CLAMP, EPDM GASKET & REMOVABLE TRI-CLAMP SPRAYBALL (DETAILS "A" & "D")
G	1-1/2"	1	TRI-CLAMP FERRULE (DETAIL "A")
H	1-1/2"	1	TRI-CLAMP FERRULE (DETAIL "A")
J	1-1/2"	1	TRI-CLAMP FERRULE (DETAIL "A")
K	1-1/2"	1	TRI-CLAMP FERRULE (DETAIL "A")
L	25mm	1	INGOLD-STYLE FITTING W/ 15° CHAMFER (B-10887) (DETAIL E)
N	1"	1	TRI-CLAMP FERRULE JACKET CONN
P	1"	1	TRI-CLAMP FERRULE JACKET CONN (LOWEST POINT)
T	1/2" NPT	1	WELD-IN PROBE-TYPE THERMOWELL W/ 100 OHM PLATINUM RTD SENSOR (2-1/2" INSERTION)(UNSTR. BY OTHERS)



TRUE ORIENTATION

THE CORROSION RESISTANCE OF THE EQUIPMENT IS NOT THE RESPONSIBILITY OF LEE INDUSTRIES, INC. WITHOUT THE PROPERLY SELECTED MATERIALS, THE USER ASSUMES THE RESPONSIBILITY OF CORROSION RESISTANCE. THIS DRAWING IS THE PROPERTY OF LEE INDUSTRIES, INC. DO NOT REPRODUCE, COPY, PHOTOGRAPH, OR DISCLOSE TO OTHERS WITHOUT THE WRITTEN PERMISSION OF LEE INDUSTRIES, INC.

LEE SERIAL NO.: 49870-1



**PROCESS SYSTEMS & EQUIPMENT**  
DIVISION OF LEE INDUSTRIES, INC.  
PHILIPSBURG, PA.

110 LITER STYLE "DP" TANK

8-13  
M.S.  
SRT

REV. DESCRIPTION DATE

SCALE: NONE

DRAWN BY: M.S.

APPROVED BY: JEB

DATE: 6-7-07

DRAWING NO.

D-1951

REV.

1